



ESTATE AGENTS

[www.cwestateagents.co.uk](http://www.cwestateagents.co.uk)



## 7 Medlock Street, Northwich CW9 7HW

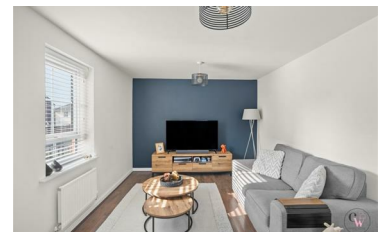
Offers in excess of £300,000







Situated on Medlock Street in Rudheath, on the outskirts of Northwich, this superb modern home enjoys a highly convenient yet peaceful location. Rudheath offers excellent access to Northwich town centre, local amenities and scenic countryside walks, while commuters benefit from easy links to the A556, A559 and M6, along with Hartford, Greenbank and Northwich train stations providing regular services to Chester, Manchester and beyond. A range of well-regarded local schools, shops, supermarkets, leisure facilities and cafes are all close at hand, making this an ideal setting for families and professionals alike.

Constructed recently by Barratt Homes, this stunning property is presented to an exceptional show home standard throughout and occupies an enviable corner plot. The layout and finish make it perfectly suited to a wide variety of buyers, including first-time buyers, growing families and those looking to take the next step up the property ladder.

- Constructed recently by Barratt Homes
- Presented to an exceptional show home standard throughout and occupies an enviable corner plot
- Perfectly suited to a wide variety of buyers, including first-time buyers, growing families and those looking to take the next step up the property ladder.
- Three well proportioned bedrooms
- Large main bedroom with en-suite shower room
- Driveway with single garage



 01606 514 152
  [info@cwestateagents.co.uk](mailto:info@cwestateagents.co.uk)  
 @CWestateAgent
  @CWestateAgents